

# AUTOMOTIVE TRAILERS



RACE TRANSPORTER

# RACE TRANSPORTER 7



 2 colours

The Race Transporter 7 is lighter, stronger and smarter and takes enclosed car transport to another level with exceptional levels of specification. Available in black or white and in weight saving twin-axle as well as tri-axle variants.



# AT A GLANCE

- The ultimate, high specification enclosed car trailer available in twin or tri-axle variants.
- Lighter and stronger chassis combined with lightweight composite flooring delivers significant weight saving to the benefit of greater load capability.
- First in class actuator powered rear door as well as electric tilt bed and electric winch with synthetic rope; all standard features.
- Full LED lighting.
- Wheels under bed provide maximum bed width suitable for carrying wide vehicles.

## CONFIGURE YOUR RACE TRANSPORTER 7...

### with a **store station**

*For increased storage and organisation of components*



### with **360° cameras**

*Four cameras for all-round visibility and safe manoeuvring*



### with **race ramps**

*For weight saving and ease of loading*



RACE TRANSPORTER

# RACE TRANSPORTER 6



**2** colours

The Race Transporter 6 is a tri-axle car transporter with very high standard specification, and can be personalised further to meet individual requirements, whether that be for motorsport, exotic supercars or vehicle logistics.



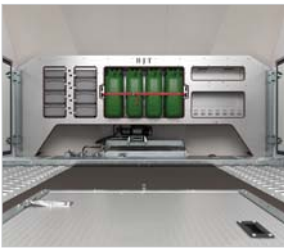
# AT A GLANCE

- Class leading enclosed car trailer, available in a choice of lengths and widths.
- Tri-axle with wheels under the bed to provide maximum bed width, suitable for carrying wide vehicles in comfort and style.
- Market leader that's the choice for professional car logistics and motorsport users.
- High standard specification includes electric tilt and electric winch, under-floor storage, LED lighting, wheel chocks and over-wheel straps.
- Wide range of options including tyre rack, work bench, awnings and interior lighting.
- Choice of 360° vision or reversing cameras for safety and ease of manoeuvring.

## CONFIGURE YOUR RACE TRANSPORTER 6...

### with a **store station**

*For increased storage and organisation of components*



### with **360° cameras**

*Four cameras for all-round visibility and safe manoeuvring*



### with an **awning**

*For added protection from the elements*





RACE TRANSPORTER

# RACE TRANSPORTER 5



 2 colours

A high specification enclosed car transporter with twin side doors, full-width rear door, full LED lighting, hydraulic tilt-bed and daylight roof. A wide range of options allows this car trailer to be specified to suit your requirements, whether for motorsport, classic cars or vehicle logistics.



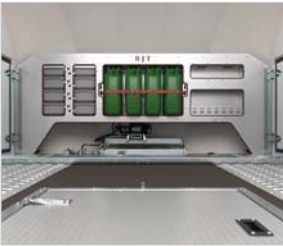
# AT A GLANCE

- Wheels to the side for a low bed height and stable towing performance.
- Standard equipment includes LED exterior lighting, hydraulic tilt-bed and electric winch for easy loading as well as daylight roof, storage trays and more.
- Wide range of options allow for personalisation include alloy wheels, tyre rack and store station.
- Choice of 360° vision or reversing cameras for safety and ease of manoeuvring.
- Available in Black or White.

## CONFIGURE YOUR RACE TRANSPORTER 5...

### with a **store station**

*For increased storage and organisation of components*



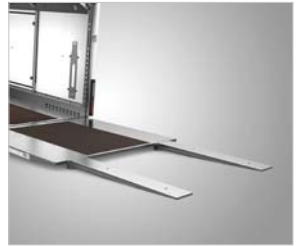
### with a **flood light pack**

*LED flood light package fully illuminates trailer interior*



### with **assistor ramps**

*For ultra-low loading angles*



RACE TRANSPORTER

# RACE TRANSPORTER 4



 2 colours

An enclosed car transporter with a full-width, full-height rear door ramp with gas springs. Can be specified with a wide range of options to suit motorsport, classic cars or vehicle logistics.





# AT A GLANCE

- Fantastic value 3,500kg enclosed car transporter trailer.
- Standard specification includes hydraulic tilt-bed and electric winch, daylight roof and gull-wing doors.
- Choice of options includes alloy wheels, full LED lighting, storage racks and trays and more.
- Choice of 360° vision or reversing cameras for safety and ease of manoeuvring.
- Available in Black or White.

## CONFIGURE YOUR RACE TRANSPORTER 4...

### with floor storage

*For storage of large/bulky items*



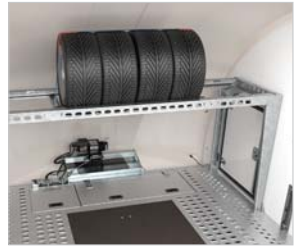
### with full LED lighting

*Super-bright, long-lasting and reliable*



### with a tyre rack

*For storage of multiple spare wheels and tyres*



RACE SPORT



# RACE SPORT



High performance enclosed car trailer suitable for automotive logistics and motorsport.



# AT A GLANCE

- Up to 3,000kg gross weight, with bed lengths from 4.5m to 5.5m.
- Large gull-wing side doors and hatches for easy access.
- Strut-assisted rear doors incorporating assistor ramps.
- Designed for loading of low ground clearance vehicles.
- Wide range of options include alloy wheels, storage racks, electric winch, tyre rack and full LED lighting.
- Choice of reversing cameras can be fitted for added safety and ease of manoeuvring.

## CONFIGURE YOUR RACE SPORT...

### with an electric winch

*For easy loading. Comes with 12V battery pack and remote control*



### with a reversing camera

*120° camera provides assistance when reversing into tight spaces*



### with assistor ramps

*1.5m fold-out ramps for an ultra-low loading angle*





# RACE SHUTTLE 3



Lightweight and aerodynamic enclosed trailer with a one piece body for mid-sized rally, club racing, motorsport or classic car transport.





# AT A GLANCE

- Aerodynamic shape ensures fuel efficiency and easy towing.
- Available with fixed bed or tilt-bed for low ground clearance cars.
- Individual ramps are stored within the deck.
- Standard features include side storage pockets, loading ramps and LED lighting.
- Options include tyre rack and fuel storage, electric or manual winch and wheel stop bar.

## CONFIGURE YOUR RACE SHUTTLE 3...

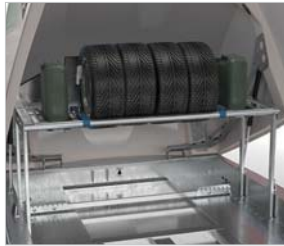
### with an electric winch

*For easy loading. 4,500 lb pulling capacity and remote control*



### with a tyre rack

*For storage of multiple spare wheels and fuel cans*



### with alloy wheels

*Available in Silver or diamond-cut Anthracite*



# RACE SHUTTLE 2



The Race Shuttle 2 is an ultra-lightweight and sleek car transporter trailer for smaller rally, club racing, motorsport or classic car transport.





# AT A GLANCE

- Aerodynamic shape ensures fuel efficiency and easy towing.
- Available with fixed bed or tilt-bed for low ground clearance cars.
- Individual ramps are stored within the deck.
- Standard features include hydraulic tilt-bed, ramps and LED lighting.
- Options include tyre rack and fuel storage, electric or manual winch and wheel stop bar.

## CONFIGURE YOUR RACE SHUTTLE 2...

### with an **electric winch**

*For easy loading. 4,500 lb pulling capacity and remote control*



### with a **wheel stop bar**

*For quick positioning to suit a variety of vehicles*



### with **alloy wheels**

*Available in Silver or diamond-cut Anthracite.*



**T TRANSPORTER**



# T TRANSPORTER



**5 colours**

Market leading open car trailer used by logistics professionals or those carrying a variety of vehicles. Available in twin or tri-axle variants with 3,500kg gross weight, the T Transporter is available with a wide range of options.



# AT A GLANCE

- Wheels are under the trailer bed so wider cars can be carried.
- Standard features include storage locker, high grip surface with multiple anchor points, 1.8m loading ramps and LED lighting.
- Optional equipment includes alloy wheels, cross-over ramps, full width tail panel, electric and hydraulic tilt bed and a choice of winches.
- Trailer can be configured in a choice of 5 body colour panels; Red, Anthracite, Blue, Black and Yellow.

## CONFIGURE YOUR T TRANSPORTER...

### with an **electric tilt-bed**

*Creates a low loading angle for cars with low ground clearance*



### with a **tyre rack**

*For storage of multiple spare wheels and tyres*



### with an **electric winch**

*For easy loading. 8,000 lb pulling capacity and remote control*



**A TRANSPORTER**



# A TRANSPORTER



4 colours

An open car trailer with a 3000kg gross weight, perfectly suited for vehicle recovery, transport logistics and motorsport. A Transporter features easy glide, internally stored ramps and a flush centre deck.





# AT A GLANCE

- Punched chassis runways provide high-grip surface and allow over-wheel strapping.
- Glide-out, punched ramps located under runway are easy to use, don't require any lifting and provide a flat deck surface.
- Standard equipment includes centre decking along with a front under-deck storage tray.
- Optional equipment includes tyre rack, storage box and alloy wheels.
- Trailer can be configured in a choice of 4 body colour panels; Red, Anthracite, Blue, and Black.

## CONFIGURE YOUR A TRANSPORTER...

### with fuel can storage

Lockable storage box can carry up to 3 x 20ltr jerry cans



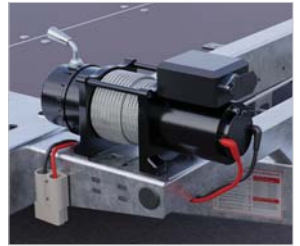
### with a tyre rack

For storage of multiple spare wheels and tyres



### with an electric winch

For easy loading. 4,500 lb pulling capacity and remote control





# WHY BRIAN JAMES TRAILERS?

## **SMOOTH RIDE**

Designed for long distance and heavy loads, our running gear features rubber torsion axles for stable, effortless towing, low maintenance sealed-for-life bearings and auto-reverse brakes for increased driving safety.

---

## **MARKET LEADERS**

Our reputation for quality and reliability has made us the go-to manufacturer for the automotive logistics and motorsport industries for over 40 years.

---

## **PERSONALISATION**

All of our trailers are highly configurable with an extensive range of options enabling you to create a trailer that's perfect for you.

---

## **STRONG RESIDUAL VALUES**

Our reputation for quality has ensured that our trailers have strong residual value. As well as working hard, our trailers hold their value for many years.

---

## **HIGHER STANDARDS**

There is a high level of standard specification across our automotive ranges including spare wheel, locking coupling head and rear loading ramps.



## NO HIDDEN CHARGES

All our trailers come ready for use without the need for additional options and with delivery to your local dealer included in the price.

## DEALER SUPPORT

Our dealers are chosen for their high levels of customer service and aftermarket support, which combined with excellent product availability through our network, means you can find a trailer that is right for you.

## AVAILABILITY

Good levels of stock available immediately, or the ability to 'make to order' your exact specification with a short lead time.

## PRICE PROTECT

Our 'Price Protect' promise guarantees the price at time of order (subject to agreed deposit), even if prices rise before delivery.

## 5 YEAR WARRANTY

All our trailers come with a 5 year chassis warranty, giving you the confidence that they are of the highest quality; the reason why they are chosen by professional users around the world.

## CHOICE OF COLOURS

Our trailers are configurable in a choice of colours where you see these logos:



*5 colours*



*2 colours*

Colours available: Red, Anthracite, Blue, Black, White and Yellow

# ABOUT US

Brian James Trailers designs and manufactures trailers up to 3.5 tonnes gross weight that are built to perform to the highest standards with an emphasis on quality, innovation, service and performance. All our trailers are designed and manufactured at our factory in Daventry, Northamptonshire, in the heart of the UK's motorsport region.

As well as our car transporter range, we also manufacture a wide range of commercial trailers. Our rugged plant and general-purpose trailers provide safe and secure transport with quiet towing characteristics for diggers, dumpers, excavators, access platforms and other machinery.

Whether it's in our car transporters or commercial trailers, our values shine through, and we pride ourselves on the strength, reliability and aesthetics of our designs. In a word, it is "quality" that we strive for in everything that we do.



# NOTES

A series of 20 horizontal dotted lines for writing notes.

**Brian James Trailers Ltd.**

Sopwith Way Drayton Fields Industrial Estate Daventry Northamptonshire NN11 8PB

Tel 01327 308833 | Email [enquiries@brianjamestrailers.co.uk](mailto:enquiries@brianjamestrailers.co.uk)

[www.brianjamestrailers.co.uk](http://www.brianjamestrailers.co.uk)



**BRIAN JAMES TRAILERS**

» Connected to you

# COMMERCIAL TRAILERS





# WHY BRIAN JAMES TRAILERS?

## **SMOOTH RIDE**

Designed for long distance and heavy loads, our running gear features rubber torsion axles for stable, effortless towing, low maintenance sealed-for-life bearings and auto-reverse brakes for increased driving safety.

---

## **MARKET LEADERS**

Our reputation for quality and reliability has made us the go-to manufacturer for the automotive logistics and motorsport industries for over 40 years.

---

## **PERSONALISATION**

All our trailers are highly configurable with an extensive range of options enabling you to create a trailer that's perfect for you.

---

## **STRONG RESIDUAL VALUES**

Our reputation for quality has ensured that our trailers have strong residual value. As well as working hard, our trailers hold their value for many years.

---

## **HIGHER STANDARDS**

There is a high level of standard specification across our commercial ranges, including; spare wheel, locking coupling head and LED lighting.



## NO HIDDEN CHARGES

All our trailers come ready for use without the need for additional options and with delivery to your local dealer included in the price.

---

## DEALER SUPPORT

Our dealers are chosen for their high levels of customer service and aftermarket support, which combined with excellent product availability through our network, means you can find a trailer that is right for you.

---

## AVAILABILITY

Good levels of stock available immediately, or the ability to 'make to order' your exact specification with a short lead time.

---

## PRICE PROTECT

Our 'Price Protect' promise guarantees the price at time of order (subject to agreed deposit), even if prices rise before delivery.

---

## 5 YEAR WARRANTY

All our trailers come with a 5 year chassis warranty giving you the confidence that they are of the highest quality; the reason why they are chosen by professional users around the world.

## CLICK & CLAMP

Auto-adjusting locking posts combined with easy-fit clamp-down sides ensure maximum rigidity and make for the quietest trailers to tow.

---

Look for these logos



## CHOICE OF COLOURS

Most of our commercial trailers are configurable in a choice of 5 highly durable body colour panels; Red, Anthracite, Blue, Black and Yellow.





# DIGGER PLANT



Designed for mini-diggers and tracked plant machinery, this tough and rugged trailer sets the industry standard for speciality plant trailers.



# AT A GLANCE

- A specialist yet high volume trailer designed primarily for the transport of mini-excavators, but can carry other plant machinery.
- Extremely strong chassis design for reliability and low lifetime running costs.
- Standard equipment includes bucket rest, LED lights, heavy-duty jockey wheel, spare wheel and locking hitch.
- Our unique **TracStrap** system is available for easy loading and secure transport.
- Optional equipment includes bucket locker, Chapter 8 chevrons and arm lock.
- Different loading options include adjustable ramps and two full-width tail panels.

## CONFIGURE YOUR DIGGER PLANT...

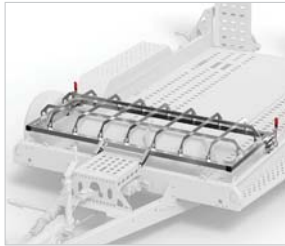
### with **TracStrap**

*Easy loading and high levels of towing security*



### with a **bucket locker**

*Lockable storage for digger buckets and other attachments*



### with a **full-width tail panel**

*1.5m long with spring assistance suitable for heavy plant*



GENERAL PLANT



# GENERAL PLANT



5 colours

Spanning the multi-purpose and plant categories, it's the ideal trailer for the transportation of scissor lifts and access platforms as well as dumpers and rollers.





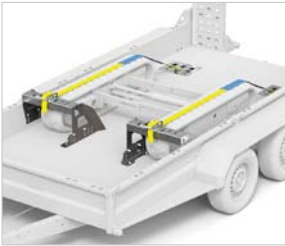
# AT A GLANCE

- New chassis and welded mudguards provide optimal rigidity and strength.
- Wide range of bed size options.
- Standard equipment includes LED lights, heavy-duty jockey wheel, spare wheel and locking hitch.
- Front and side extension panels can be easily fitted and removed.
- Tilt-bed with short ramps for ultra-low loading angles available as an option.
- Multiple robust lashing points.
- Configurable in a choice of 5 body colour panels; Red, Anthracite, Blue, Black and Yellow.

## CONFIGURE YOUR GENERAL PLANT..

### with **TracStrap**

*Easy loading and high levels of towing security*



### with **side extensions**

*High side panels enable the transport of bulkier loads*



### with a **full-width tail panel**

*1.5m long with spring assistance suitable for heavy plant*





TIPPER

# TIPPER



5 colours

This tough and configurable Tipper trailer comes with a host of market-leading features, side extensions and much more.



# AT A GLANCE

- Choice of double-hinged tailgate or side-hinged rear doors.
- Dropsides, LED lights, heavy-duty jockey wheel, spare wheel, locking hitch and battery trickle-charging from tow vehicle as standard.
- Selection of side extensions available including double-height and heavy-duty.
- With auto-adjusting locking posts and easy-fit clamp-down sides, **Click & Clamp** ensures maximum rigidity and makes for one of the quietest trailers to tow.
- Integral tie-down points inside the bed for carrying machinery.
- Trailer and dropsides can be configured in a choice of 5 body colour panels; Red, Anthracite, Blue, Black and Yellow.

## CONFIGURE YOUR TIPPER...

### with a **side hinged door**

*Strong, reliable and engineered for easy operation*



### with **side extensions**

*Side panels enable the transport of bulkier loads*



### with **ramps**

*For general loading and lower loading angles*





CONNECT

# CONNECT



5 colours

The Connect is a configurable flatbed trailer and is ideal for the transportation of construction materials and pallets as well as machinery and vehicles.



# AT A GLANCE

- A highly configurable and robust flat-bed trailer.
- LED lights, heavy-duty jockey wheel, spare wheel and locking hitch as standard.
- Selection of side extensions available, including double-height and heavy-duty.
- With auto-adjusting locking posts and easy-fit clamp-down sides, **Click & Clamp** ensures maximum rigidity and makes for one of the quietest trailers to tow.
- Integral tie-down points inside the bed for carrying machinery.
- Trailer and optional dropsides can be configured in a choice of 5 body colour panels; Red, Anthracite, Blue, Black and Yellow.

## CONFIGURE YOUR CONNECT...

### for transporting loads

*with sides that can be easily dropped or removed for fork-lift loading*



### for commercial use

*with lightweight yet robust panels for the transport of bulkier loads*



### for vehicle transport

*with hydraulic tilt-bed, loading ramps and full-width stop bar*



# ABOUT US

Brian James Trailers designs and manufactures trailers up to 3.5 tonnes gross weight that are built to perform to the highest standards with an emphasis on quality, innovation, service and performance. All our trailers are designed and manufactured at our factory in Daventry, Northamptonshire, in the heart of the UK's motorsport region.

As well as our commercial trailers, we also manufacture an extensive range of open and enclosed car transporter trailers which are market leaders in the UK where we have been building trailers for automotive logistics and motorsport for over 40 years.

Whether it's in our car transporters or commercial trailers, our values shine through, and we pride ourselves on the strength, reliability and aesthetics of our designs. In a word, it is "quality" that we strive for in everything that we do.



**Brian James Trailers Ltd.**

Sopwith Way Drayton Fields Industrial Estate Daventry Northamptonshire NN11 8PB

Tel 01327 308833 | Email [enquiries@brianjamestrailers.co.uk](mailto:enquiries@brianjamestrailers.co.uk)

[www.brianjamestrailers.co.uk](http://www.brianjamestrailers.co.uk)

